

# Guidebook for Visitors

## 访问学者信息手册

Mathematics--The Language of the World



上海交通大学数学系  
Department of Mathematics  
Shanghai Jiao Tong University

# Welcome to the Department of Mathematics, SJTU

Welcome to the Department of Mathematics! We are looking forward to supporting you during your stay at Shanghai Jiao Tong University. We are here to assist you and refer you to the appropriate resources when you need them. This Guide Book contains helpful information and we suggest that you read it very carefully. We hope that it will serve as a useful reference guide throughout your stay.

If you have any questions about the contents of this guide or need more information on a certain topic, you can search on SJTU's website at <http://www.math.sjtu.edu.cn> or use any of the links we provide in this Guide Book. We would like to continue to improve this Guide Book, so we would appreciate it if you could give us your comments, feedback or suggestions.

Note: Some commercial websites listed in this Guide Book are only for your reference. Please use them with your own judgment.

Best regards,

Department of Mathematics  
Shanghai Jiao Tong University

---

## 欢迎访问交大数学系

欢迎您访问交大数学系！在您访问期间，数学系办公室行政团队将为您提供各种服务。本《手册》包含相关流程和资源的相关信息，请您认真阅读相关内容。如果您对本《手册》中的内容有任何疑问，请登录数学系官方网站 <http://www.math.sjtu.edu.cn> 了解相关信息。本《手册》中的内容会定期更新，欢迎您对相关内容提出建设性意见和建议。

注：本《手册》中提供的一些商业网站仅供参考。

上海交通大学数学系

# Contents 目录

<b>Part I : Introduction 概况</b>	2
Shanghai 上海	3
About SJTU 上海交通大学	4
About Department of Mathematics, SJTU 交大数学系	6
<b>Part II : Transportation &amp; accommodation 交通与住宿</b>	11
Address 数学系地址及联系方式	12
Transportation 交通指南	12
Accommodation 住宿指南	14
Dinning 餐饮指南	16
<b>Part III : Campus life 校园生活</b>	18
Shuttle bus and campus bus schedule 校区间班车及闵行校区校园巴士时刻表	19
Visitor ID card/campus card 访问学者校园卡 / 消费卡	21
Campus canteen 校园食堂	23
Supermarkets & shopping centers 超市和购物中心	24
Making calls 如何打电话	24
Wireless network 无线网络	25
<b>Part IV : Banks, Post Offices, Hospitals 银行, 邮局, 医院</b>	26
Money Exchange and Banks 银行	27
Post office 邮局	28
Hospitals and Clinics Services 医院及医疗服务	29
<b>Part V : Other Useful Information 其他事项</b>	30
Transportation 交通	31
Voltage 电压	36
Public holidays in mainland China 公共假期	36
Useful Phone Numbers in Shanghai 实用电话号码信息汇总	36
<b>Map 地图</b>	37
<b>Part VI : FAQ 常见问题</b>	39
<b>General Office Staff of Mathematics Department</b>	
<b>数学系行政人员信息指南</b>	42



Part I  
第一部分

> Introduction  
概况





# Shanghai

上海

---

Shanghai literally means the city by the sea. Shanghai is situated at 31°14' north latitude and 121° 29' east longitude, on the west shore of the Pacific Ocean. It is bordered on the north and west by Jiangsu Province, on the south by Zhejiang Province, and on the east by the East China Sea. Right in the middle of China's east coastline, Shanghai is an excellent sea and river port, boasting easy access to the vast hinterland. The city is divided into two parts by the Huangpu River: Puxi (west of the Huangpu River) and Pudong (east of the Huangpu River). Puxi is the older part of the city and hosts the majority of shops, restaurants and museums. Pudong is the modern part, and is recognized for its rather unusual yet extremely impressive skyscrapers such as Shanghai's tallest buildings, Shanghai Center, Shanghai International Financial Center, Jinmao Tower and the Oriental Pearl TV Tower.

上海（Shanghai），简称“沪”或“申”，中国第一大城市，中华人民共和国直辖市之一，中国国家中心城市，中国的经济、金融中心，繁荣的国际大都市，是中国首个自贸区“中国（上海）自由贸易试验区”的所在地。上海地处长江入海口，东向东海，隔海与日本九州岛相望，南濒杭州湾，西与江苏、浙江两省相接，共同构成以上海为龙头的中国最大经济区“长三角经济圈”。上海拥有深厚的近代城市文化底蕴和众多历史古迹，江南的吴越传统文化与各地移民带入的多样文化相融合，形成了特有的海派文化。2010年成功举办了2010年世界博览会。

# About SJTU

## 上海交通大学

---

Shanghai Jiao Tong University (SJTU) is a university under direct administration of China's Ministry of Education and sponsorship of both the Ministry and Shanghai Municipality. It is one of the oldest institutions of higher education in China, founded in 1896 with its root in Nan Yang Public School. It has so far brought up over 100,000 talented people for the country, among whom the most famous one is Mr. Jiang Ze-min, the former president of China. Over 200 members of the Chinese Academy of Science and the Chinese Academy of engineering are alumni of SJTU.

Today SJTU boasts 28 academic schools: the schools of Naval Architecture and Ocean Engineering, Mechanical and Power Engineering, Electronics and Electric Engineering, Material Science and Engineering, Sciences, Life Science and Technology, Science, Humanities and Social Science, Chemistry and Chemical Engineering, Management, International and Public Affairs, Foreign Languages, Agriculture and Biology, Environmental Science and Engineering, Pharmaceutics, Medical, Law, Media and Design, Micro-electronics, Information Security, Software and 2 directly affiliated departments: Department of Plastic Technology and the Department of Physical Education, plus a Graduate School. Besides, it also has School of Continuing Education, School of International Education, and a Vocational School. There are 67 undergraduate programs, 267 masters-degree programs, 142 Ph.D. programs and 26 post-doctorate programs.

SJTU has five campuses including Xuhui, Minhang, Luwan, Qibao and Fahu, and offers plenty of advanced teaching and research equipment and facilities. And now, SJTU has a total of 7,827 teaching and administrative staff. Among whom 2,978 are fulltime faculty members that include 722 full professors and 1,098 associate professors, including 33 academicians of the Academy of Sciences and Academy of Engineering and more than 40,000 students, including 20,000 undergraduate students, 22,931 graduate students, and approximately 5,000 international students, from over 80 different countries and regions.

SJTU has always been actively involved in International academic exchange programs with foreign universities. To date, it has established relations with over 150 renowned universities and colleges worldwide, as well as connections with many research institutions, corporations and enterprises at home and abroad. SJTU sends excellent teachers and students abroad every year to give lectures, to study or to attend international academic conferences. SJTU also invites foreign specialists and scholars to give lectures or to take part in academic exchanges. SJTU is the nodal point of "China Education Science and Research Networks" in the east China region, and through computer networks, it has faster and closer connections with universities, scientific research institutions and corporations both at home and abroad.



上海交通大学是我国历史最悠久、享誉海内外的高等学府之一，是教育部直属并与上海市共建的全国重点大学。经过 118 年的不懈努力，上海交通大学已经成为一所“综合性、研究型、国际化”的国内一流、国际知名大学。交通大学始终把人才培养作为办学的根本任务。

一百多年来，学校为国家和社会培养了 20 余万各类优秀人才，包括一批杰出的政治家、科学家、社会活动家、实业家、工程技术专家和医学专家，如江泽民、陆定一、丁关根、汪道涵、钱学森、吴文俊、徐光宪、张光斗、黄炎培、邵力子、李叔同、蔡锷、邹韬奋、严隽琪、陈敏章、王振义、陈竺等。在中国科学院、中国工程院院士中，有 200 余位交大校友；在国家 23 位“两弹一星”功臣中，有 6 位交大校友；在 18 位国家最高科学技术奖获得者中，有 3 位来自交大。截至 2013 年 12 月，学校共有 28 个学院 / 直属系，24 个直属单位，12 家附属医院，全日制本科生 16099 人、研究生 26286 人（其中博士研究生 6108 人）；有专任教师 2851 名，其中教授 872 名；中国科学院院士 18 名，中国工程院院士 22 名，中组部顶尖“千人计划”1 名，“千人计划”长期项目 71 名、外专项目 6 名、短期项目 7 名，“青年千人”56 名，“长江学者”特聘教授和讲座教授共 117 名，国家杰出青年基金获得者 98 名，国家重点基础研究发展计划（973 计划）首席科学家 30 名，国家重大科学研究计划首席科学家 14 名，国家基金委创新研究群体 9 个，教育部创新团队 20 个。



# About Department of Mathematics, SJTU

交大数学系

---

Overview  
数学系简介

## History 历史沿革

Nanyang Public School was established in Shanghai in 1896, which is deemed as the predecessor of Jiao Tong University. Mathematics, as one of the most fundamental subjects, appeared in the curricula for the first-time recruited students of the Normal School in April 1898. The Department of Mathematics of Shanghai Jiao Tong University was established in 1928, which enjoys a long history and has made great contribution to the development of modern mathematics of China, for instance, the first congress of Chinese Mathematical Society was just convened in Shanghai Jiao Tong University. In September 1978, the Department of Applied Mathematics was reestablished in Shanghai Jiao Tong University, and the name was restored as Department of Mathematics by the winter of 2001. Enjoying the history of more than 100 years, the Department of Mathematics of Shanghai Jiao Tong University boasts numerous distinguished alumni, among whom the most recognized mathematicians are Wenjun Wu, Hesheng Hu, Sheng Gong. In addition, there are also some outstanding entrepreneurs among the Math Department alumni, such as Wen Ling, CEO of Shenhua Group Corporation, and Nanpeng Shen, the founder of Sequoia Capital.

1896年，交通大学的前身南洋公学创立，从1898年4月招收第一届师范生起，开设了数学课。上海交通大学数学系成立于1928年，对中国近代数学的发展做出过重要贡献，中国第一次数学会就在上海交大召开。1952年院系调整，数学系大部分师生被调整到复旦大学和华东师范大学。1956年，交大西迁，副校长张鸿教授首次将交大教学传统归纳为“门槛高，基础厚，要求严”。1978年9月，重新组建应用数学系；2001年冬恢复为数学系。百年来交大数学系桃李芬芳，知名校友中有获得国家最高科技奖的吴文俊院士、胡和生院士及龚升等著名数学家，也有神华集团总裁凌文、红杉中国基金创始人沈南鹏等杰出企业家。

## Faculty 师资队伍

As of 2014, the Department of Mathematics now has 118 members, including 30 full professors, 59 associate professors, 4 winners of NSFC "Outstanding Junior Investigator Award", and 4 Yangtze River Scholars.

Full-time Faculty: 118

Professors: 30

Associate Professors: 59

Members of Chinese Academy of Sciences: 1 (Part-time)

Winners of the National "Master Teacher Award": 1

Scholars under the Recruitment Program of Global Experts: 4

Recipients of National Science Funds for Outstanding Youth: 4

数学系现有教职员工118名，其中专任教师102名，具有博士学位的老师占88%。教授30名（含上海交通大学冠名讲席教授6名），外聘院士1名（兼职）。国家“千人计划”专家4名，上海“千人计划”专家2名，国家“青年千人计划”专家2名，国家杰出青年基金获得者4名（A类2名，B类2名），“长江学者奖励计划”特聘教授2名，讲座教授2名；国家级教学名师1名，上海市教学名师2名；“百千万人才工程”国家级人选1人；首届高校优秀青年教师教学科研奖励计划获得者2名；教育部新世纪人才8名；上海市优秀学科带头人2名；上海市曙光学者3名；上海市科委科技启明星3名等优秀人才。

## 省部级以上人才称号获得者：

千人计划获得者：蔡申瓯、金石、王立河 李丛明  
 国家“杰出青年科学基金”获得者：章璞、肖冬梅、金石（B类）  
 人事部“新世纪百千万人才工程”国家级入选者：王亚光  
 教育部长江学者特聘教授：蔡申瓯  
 教育部长江学者讲席教授：金石 王立河  
 国家级教学名师：乐经良 2006  
 首届高校优秀青年教师教学科研奖励计划获得者：王亚光、李红泽  
 中组部青年千人计划：应文俊 张镭 朱红  
 中组部青年拔尖人才支持计划：徐振礼 2012  
 教育部“新世纪优秀人才支持计划”入选者：  
 肖冬梅、张祥、李亚纯、黄建国、梁进、徐振礼、刘卫东

## Research groups 学科研究团队

### 1.Algebra 代数学 Members : 9 (共9人)

Yun Gao 高云 Assistant professor	Cuipo Jiang 姜翠波 Professor	Qifen Jiang 蒋启芬 Associate professor
Zhihao Ma 麻志浩 Associate professor	C.M. Ringel Visiting professor	Mei Si 司梅 Associate professor
Tongsuo Wu 武同锁 Professor	Guanglian Zhang 张光连 Professor	Pu Zhang 章璞 Professor

### 2.Analysis & Geometry 分析与几何 Members : 11 (共11人)

Jinshen Han 韩金晟 Assistant professor	Jin Liang 梁进 Professor	Yi Li 李逸 Special associate researcher
Ling Pi 皮玲 Associate professor	Feng Rong 戎锋 Special researcher	Fang Wang 王芳 Special associate researcher
Deliang Xu 许德良 Professor	Yongzhong Xu 徐永忠 Special researcher	Yihu Yang 杨义虎 Professor
Lili Zhao 赵俐俐 Associate professor	Chunqin Zhou 周春琴 Professor	

### 3. Combinatorics & graph theory 组合图论 Members : 6 (共 6 人)

Eiichi Bannai 坂内英一 Chair professor	Dameng Deng 邓大萌 Associate professor	Jun Ma 马俊 Assistant professor
Ming Wang 王铭 Associate professor	Yaokun Wu 吴耀琨 Professor	Xiao-Dong Zhang 张晓东 Professor

### 4. Computational mathematics 计算数学 Members : 18 (共 18 人)

Wei Cai 蔡伟 Professor	Liping He 贺力平 Associate professor	Jianguo Huang 黄建国 Professor
Shi Jin 金石 Professor	Daming Li 李大明 Associate professor	Jinglai Li 李敬来 Special researcher
Jianfei Mu 沐建飞 Associate professor	Lin Qiu 仇璘 Associate professor	Min Tang 唐敏 Special researcher
Jian Wang 王健 Associate professor	Xiaomin Wang 王晓敏 Associate professor	Zeng-Qi Wang 王增琦 Associate professor
Zhenli Xu 徐振礼 Special researcher	Wenjun Ying 应文俊 Special researcher	Jin Zeng 曾进 Associate professor
Lei Zhang 张镭 Special researcher	Xiaoqun Zhang 张晓群 Special researcher	Gang Zhou 周钢 Associate professor

### 5. Mathematical physics 数学物理 Members: 3 (共 3 人)

Chun-li Chen 陈春丽 Associate professor	Guo-fu Yu 虞国富 Associate professor	Zuonong Zhu 朱佐农 Professor
-----------------------------------------	--------------------------------------	------------------------------

### 6. Number theory 数论 Members : 4 (共 4 人)

Zhen Cui 崔振 Assistant professor	Hongze Li 李红泽 Professor	Jiyou Li 李吉有 Associate professor
Chunlei Liu 刘春雷 Professor		

### 7. Operations research 运筹学 Members: 2 (共 2 人)

Jinyan Fan 范金燕 Professor	Xiaomin Wang 王晓敏 Associate professor
-----------------------------	-----------------------------------------

### 8. Ordinary Differential Equations & Dynamical Systems

#### 常微分方程和动力系统 Members: 5 (共 5 人)

Xianfeng Chen 陈贤峰 Associate professor	Yilei Tang 唐异垒 Associate professor	Dongmei Xiao 肖冬梅 Professor
Jiang Yu 于江 Professor	Xiang Zhang 张祥 Professor	

### 9. Partial Differential Equations 偏微分方程 Members: 14 (共 14 人)

Shijin Deng 邓师瑾 Associate professor	Beixiang Fang 方北香 Associate professor	Qilong Gu 顾琪龙 Assistant professor
Yachun Li 李亚纯 Professor	Congming Li 李从明 Chair professor	Lihe Wang 王立何 Professor
Weike Wang 王维克 Professor	Ya-Guang Wang 王亚光 Professor	Chunjing Xie 谢春景 Special researcher
Feng Xie 谢峰 Associate professor	Deliang Xu 许德良 Professor 教授	Xiongfeng Yang 杨雄锋 Associate professor
Yongjiang Yu 余用江 Assistant professor	Chunqin Zhou 周春琴 Professor	

### 10. Statistics, probability and financial mathematics

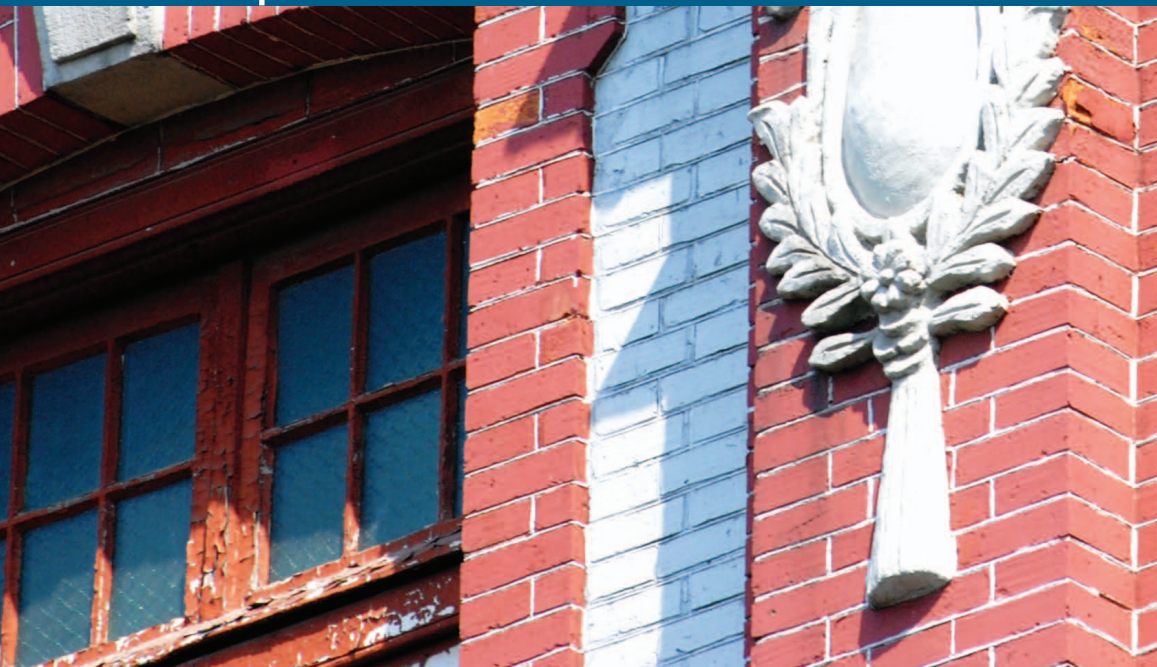
#### 统计、概率和金融数学 Members : 9 (共 9 人)

Xinxing Chen 陈新兴 Assistant professor	Dong Han 韩东 Professor	Jianzhong Lin 林建忠 Associate professor
Weidong Liu 刘卫东 Professor	Zhuling Sun 孙祝岭 Associate professor	Liqing Yan 严利清 Special researcher
Guilan Wang 王桂兰 Associate professor	Jinguo Xian 咸进国 Assistant professor	Liuqing Xiao 肖柳青 Associate professor



Part II  
第二部分

Transportation & accommodation  
➤ 交通与住宿



# Address

## 数学系地址及联系方式

Department of Mathematics  
Shanghai Jiao Tong University  
Math Building  
No. 800 Dongchuan Road, Minhang District, Shanghai 200240, China  
Tel: 86-21-54743151 Fax: 86-21-54743152

上海交通大学数学系  
上海市闵行区东川路 800 号数学楼 邮编: 200240  
联系电话: 86-21-54743151 54743148 传真: 86-21-54743152

# Transportation

## 交通指南

### General directions to the Minhang Campus, SJTU 如何到达交大闵行校区

#### By Taxi 乘出租车

From Pudong Airport/Hongqiao Airport/Hongqiao Railway Station:  
It is recommended to take a taxi directly to the Minhang Campus, Shanghai Jiao Tong University.  
If necessary, you can print the following information and show it to taxi driver: (To the Minhang Campus of SJTU): 请载我到上海市闵行区东川路 800 号 上海交通大学闵行校区 (东川路永平路大门进校区)。谢谢!”

#### By Metro 乘地铁

From Pudong Airport/Hongqiao Airport/Hongqiao Railway Station: Please take Metro Line 2, transfer to Line 1 at People's Square Station, and then transfer to Line 5 at Xinzhuang Station and get off at Dongchuan Road Station. Then take a taxi to Minhang Campus or the hotel.  
从浦东机场、虹桥机场、虹桥火车站出发, 可搭乘地铁 2 号线至人民广场站换乘地铁 1 号线, 乘至莘庄站换乘地铁 5 号线, 5 号线东川路站下车。下车后乘出租车至闵行校区或宾馆。

#### By Bus 乘公交车

Directions from Hongqiao Airport: You can take bus Hongqiao #4 directly only at Hongqiao Airport.  
从虹桥机场出发, 可乘虹桥枢纽 4 路公交直达上海交通大学闵行校区。

## Specific directions to the Department of Mathematics, SJTU 如何到达交大数学系

### By Taxi (乘出租车)

Specific directions from Pudong Airport to the Department of Mathematics of SJTU:

Please give the following message to the taxi driver if you don't speak Chinese:

请送我到闵行区东川路 800 号上海交通大学数学系。

请走 S32 (从 1 号航站楼上 S32) 到剑川路下, 沿剑川路向西, 左拐至沧源路, 再左拐至东川路, 进东川路 800 号 (近永平路) 大门进入闵行校区, 进门后向左, 然后向北直行 200 米即可见数学楼。

Please take me to the Department of Mathematics of Shanghai Jiao Tong University, located at 800 Dongchuan Road Minhang District.

Please take highway S32 (from Terminal 1), exit on Jianchuan Road. Turn right at the traffic lights to Jianchuan Road, then turn left to Cangyuan Road, followed by left turn to Dongchuan Road. 800 Dongchuan Road (the gate of SJTU, at the cross of Dongchuan Road and Yongping Road) is on your left. After entering the gate, turn left and go straight to the north and the Department of Mathematics is about 200 meters on your right.

Specific directions from Hongqiao Airport to the Department of Mathematics of SJTU:

Please give the following message to the taxi driver if you don't speak Chinese:

请送我到闵行区东川路 800 号上海交通大学数学系。

请走 S4 到剑川路下, 沿剑川路向西, 左拐至沧源路, 再左拐至东川路, 进东川路 800 号 (近永平路) 大门进入闵行校区, 进门后向左, 然后向北直行 200 米即可见数学楼。

Please take me to the Department of Mathematics of Shanghai Jiao Tong University, located at 800 Dongchuan Road Minhang District.

Please take highway S4, exit on Jianchuan Road. Turn right at the traffic lights to Jianchuan Road, then turn left to Cangyuan Road, followed by left turn to Dongchuan Road. 800 Dongchuan Road (the gate of SJTU, at the cross of Dongchuan Road and Yongping Road) is on your left. After entering the gate, turn left and go straight to the north and the Department of Mathematics is about 200 meters on your right.

### By Metro (乘地铁)

从浦东 / 虹桥机场 / 虹桥火车站: 乘坐地铁 2 号线, 到人民广场站换乘地铁 1 号线 (莘庄方向), 到达莘庄站后换乘地铁 5 号线 (闵行开发区方向), 5 号线东川路站下车。下车后换乘出租车可直接到闵行校区, 从东川路永平路大门进入, 进门后向左, 然后向北直行 200 米即可见数学楼。或 5 号线东川路下车后沿东川路步行约 30 分钟可到交大闵行校区。

From Pudong Airport/Hongqiao Airport/Hongqiao Railway Station: Take Metro Line 2 first and transfer to Line 1 (with the destination of Xinzhuang) at People Square, and then transfer to Line 5 at Xinzhuang, and then get off at Dongchuan Road. Then take a taxi to get to the Minhang Campus (enter the gate at the cross of Dongchuan Road and Yongping Road), and then turn left and drive straight toward north for 200 meters and the Department of Mathematics is on your right. Or you can walk along the Dongchuan Road to get to the Minhang Campus after getting off from Metro Line 5, which may cost you around 30 minutes.

### By Bus (乘公交车)

从浦东机场: 乘坐机场 7 线到上海南站, 然后换乘地铁 1 号线, 再换乘地铁 5 号线。

From Pudong Airport: Take Airport Bus 7 to South Shanghai Rail Station, and transfer to Metro Line 1 and then transfer to Metro Line 5.

从虹桥机场: 乘坐虹桥枢纽 4 路公交直达上海交通大学闵行校区。

From Hongqiao Airport: Take bus Hongqiao #4 to directly get to the Minhang Campus of Shanghai Jiao Tong University.

从虹桥火车站: 乘坐虹桥枢纽 5 路到沪闵路剑川路站下车, 之后换乘闵莘线, 到达加大闵行校区。

From Hongqiao Railway Station: Take bus Hongqiao #5 and get off at the station of HUmin Road and Jianchuan Road, and transfer to Minxin bus and then you can arrive at the Minhang Campus of Shanghai Jiao Tong University after 4 stops.

# Accommodation

## 住宿指南

### Academic Exchange Center 学术活动中心

#### Address

Academic Exchange Center

Minhang Campus, SJTU

800 Dongchuan Rd. Minhang District, Shanghai 200240, China

Tel: 86-21-54740800

Hotel Reception: 24-hour service

Meals: Lunch-11:00~13:30 Dinner-17:00~20:00

Phone: (86-21)-54740800

Fax (for reservation): (86-21)- 021-54740317

上海交通大学闵行校区学术活动中心

上海市闵行区东川路 800 号 (校内)

前台电话: 86-21-54740800

客房: 24 小时总台接待服务

餐饮: 中餐 11:00 ~ 13:30 晚餐 17:00 ~ 20:00

联系电话: 021-54740800

传真预订: 021-54740317

#### Location of the Academic Exchange Center

The Academic Exchange Center is located in the Western Part of the Minhang Campus of SJTU. After getting through the gate at the cross of Dongchuan Road and Yongping Road, turn right and go towards east and the Academic Exchange Center is on your right.

#### 学术活动中心位置

学术活动中心位于上海交通大学闵行校区西区，从东川路永平路门进来后右转东行 100 米即到。

#### Directions for reference:

From Pudong Airport to the Academic Exchange Center, SJTU

Please give the following message to the taxi driver if you don't speak Chinese:

请把我送到闵行区东川路 800 号上海交通大学学术活动中心。

请走 S32 (从 1 号航站楼上 S32) 到剑川路下，到红绿灯处往右拐上剑川路，到沧源路左拐，到东川路左拐，到 800 号进左边交大门，进门后往右，学术活动中心在 50 米后右手边。

Please take me to Academic Exchange Center of Shanghai Jiao Tong University, located at 800 Dongchuan Road Minhang District. Please take highway S32 (from Terminal 1), exit on Jianchuan Road. Right turn at the traffic lights to Jianchuan Road, then turn left to Cangyuan Road, followed by left turn to Dongchuan Road. 800 Dongchuan Road is on your left which is the gate of SJTU. Enter the gate, turn right and the Academic Center is about 50 meters on your right.

From Hongqiao Airport to the Academic Exchange Center, SJTU

Please give the following message to the taxi driver if you don't speak Chinese:

请把我送到闵行区东川路 800 号上海交通大学学术活动中心。

请走 S4 高架到剑川路下，到红绿灯处往右拐上剑川路，到沧源路左拐，到东川路左拐，到 800 号进左边交大门，进门后往右，学术活动中心在 50 米后右手边。

Please take me to Academic Exchange Center of Shanghai Jiao Tong University, located at 800 Dongchuan Road Minhang District. Please take highway S4, exit on Jianchuan Road. Right turn at the traffic lights to Jianchuan Road, then turn left to Cangyuan Road, followed by left turn to Dongchuan Road. 800 Dongchuan Road is on your left which is the gate of SJTU. Enter the gate, turn right and the Academic Center is about 50 meters on your right.

## Xuhui Faculty Club 徐汇教师活动中心

### Address

Xuhui Faculty Club  
Xuhui Campus, SJTU  
1954 Huashan Road, Xuhui District, Shanghai 200240, China  
Tel:(86-21)- 62822822  
徐汇教师活动中心  
地址：上海市徐汇区华山路 1954 号  
电话：(86-21) 62822822

### Directions for reference:

From Pudong Airport/Hongqiao Airport to the Xuhui Faculty Club, SJTU

By Taxi (乘出租车)

Please give the following message to the taxi driver if you don't speak Chinese:  
请把我送到徐汇区广元西路 55 号上海交通大学徐汇校区教师活动中心。谢谢!

By Metro (乘地铁)

从虹桥机场乘坐地铁 10 号线，到上海交通大学站下车即可。

From Hongqiao Airport: Take Metro Line 10 from Hongqiao Airport and get off at Shanghai Jiao Tong University Station.

从浦东机场乘地铁 2 号线（注意须在广兰路下车再换乘），到世纪大道站下车，乘坐地铁 9 号线，在徐家汇站下车，步行 10 分钟即到。

From Pudong Airport: Take Metro Line 2 (pay attention to change at Guanglan Station), and get off at the Century Avenue Station, and transfer to Metro Line 9 and get off at Xujiahui Station, and you may take 10 minutes by walk to get to the Xuhui Faculty Club.

# Dinning

## 餐饮指南

### Liu Yuan

#### 留园

Phone: (86-21) 54747207

Address: 800 Dongchuan Road (you can go straight along Dongchuan Road from the first gate of 800 Dongchuan Road, and Liu Yuan is 100 meters on your left.)

地址：上海交通大学校内（从东川路永平路的大门沿着东川路向前 100 米，左手边可见留园）

电话：(86-21) 54747207

## Campus Cafe 校园咖啡 (第五食堂内)

Phone: (86-21) 34207646

It is located in the eastern part of the campus (inside the 5th canteen)

电话：(86-21) 34207646

第五食堂二楼

## Timo Cafe (near the 1st canteen) 甜魔咖啡 (第一餐饮大楼对面)

Phone: (86-21)34205688

It is located between Pao Yue-Kong Library and the 1st canteen

电话：(86-21) 34205688

位于包玉刚图书馆和第一餐饮大楼中间。

## Campus map 校园地图





Part III  
第三部分

> Campus life  
校园生活



# Shuttle bus and campus bus schedule

## 校区间班车及闵行校区校园巴士时刻表

### Shuttle Bus between Xuhui and Minhang Campus

From Monday to Friday (4RMB)

Xuhui → Minhang: 07:00, 07:30, 09:00, 10:10, 12:00, 13:00, 15:00, 17:00, 18:00, 20:00, 21:30

Minhang → Xuhui: 06:40, 08:00, 10:10, 12:15, 14:10, 16:00, 17:00, 18:00, 19:00, 20:40

Holidays and weekends (4RMB)

Xuhui → Minhang: 08:30, 13:30, 17:30

Minhang → Xuhui: 07:30, 12:30, 16:30

### 闵行和徐汇校区间班车

徐汇校区→闵行校区 [自2014年3月3日起, 7:00班次由北二门进入闵行校区, 15:00(含)之前班次由北三门进入闵行校区, 其他班次由北一门进入闵行校区]

07:00, 07:30, 09:00, 10:10, 12:00, 13:00, 15:00, 17:00, 18:00, 20:00, 21:30

闵行校区→徐汇校区

06:40, 08:00, 10:10, 12:15, 14:10, 16:00, 17:00, 18:30, 20:40

双休日、节假日班车运行时刻

徐汇校区→闵行校区 (班车由北一门进入闵行校区) (直达) 8:30, 13:30, 17:30

闵行校区→徐汇校区 (直达) 7:30, 12:30, 16:30

## Minhang Campus Bus Schedule

### Counter-Clockwise: Jing Jing Plaza - Jing Jing Plaza

Departure Time

07:40, 08:00, 08:15, 08:25, 08:50, 09:45, 10:00, 10:30, 11:00, 11:25, 11:40, 12:00, 12:30, 13:00, 13:25, 13:40, 14:20, 14:30, 15:00, 15:40, 16:00, 16:15, 16:30, 16:45, 17:10, 17:40, 17:55, 18:30, 19:45, 20:00

Jing Jing Plaza - School Hospital - Humanities Building - Middle East Classroom Building - Library and Information Building - New Administration Building - Telecom Blocks - the South Gate - School of Mechanical Engineering - the East Gate - School of Naval Architecture, Ocean and Civil Engineering - School of Medicine - Student Service Center - Phase VI Student Apartments - Hualian Life Center - Pao Yue Kong Library - Materials Building - Jing Jing Plaza

### Clockwise: Jing Jing Plaza - Jing Jing Plaza

Departure Time

08:45, 09:15, 09:30, 11:15, 11:30, 12:15, 13:15, 14:15, 15:15, 15:45, 16:30

Jing Jing Plaza - Materials Building - Pao Yue Kong Library - Hualian Life Center - Student Services Center - Phase VI Student Apartments - Students Service Center - School of Naval Architecture, Ocean and Civil Engineering - School of Medicine - the East Gate - School of Mechanical Engineering - Telecom Blocks - the South Gate - Telecom Blocks - New Administration Building - Library and Information Building - Middle East Classroom Building - Humanities Building - School Hospital - Jing Jing Plaza

## 闵行校区校园巴士（逆时针方向和顺时针方向）

逆时针方向：菁菁堂 - 菁菁堂

出发时间：

07:40	08:00	08:15	08:25	08:50	09:45	10:00	10:30
11:00	11:25	11:40	12:00	12:30	13:00	13:25	13:40
14:20	15:00	15:40	16:00	16:15	16:30	16:45	17:10
17:40	17:55	18:30	19:45	20:00			

顺时针方向：菁菁堂 - 菁菁堂

出发时间：

08:45	09:15	09:30	11:15	11:30	12:15	13:15	14:15
15:15	15:45	16:30					

# Visitor ID card/campus card

## 访问学者校园卡 / 消费卡

---

The Visitor ID card is used as a form of identification as well as an electronic purchase card in all the campuses of SJTU. Visitors can use their campus cards to pay for what they have consumed on campus including dining, purchase, bath, and take buses between campuses. On how to use the campus card, please read “Instructions for using the Student ID Card” below:

### Instructions for using the Visitor ID Card

- Applying for the card:

Room 1101, Limin Qin, Tel: 54743151-1526 E-mail: qinlimin@sjtu.edu.cn  
(Only visitors staying in SJTU for more than 30 days can apply for such card)

Materials to be provided:

Application form

Passport copy

Affiliation ID identity

- 访问学者消费卡申请

只有访问时间超过 30 天的访问学者才能申请此卡。如需申请，请联系外事秘书秦丽敏，电话：54743151-1526 E-mail: qinlimin@sjtu.edu.cn，需要提供以下材料：

申请表一份（可以数学系内网下载）

护照复印件

国外单位工作证

- Recharging and checking balances:

The campus card cannot be overdrawn. Visitors can recharge their campus cards, using cash only.

Minhang Campus: Cafeteria 1, Mon to Fri

Card users can check the account balance by calling 34202020, logging on to <http://ecard.sjtu.edu.cn/homeLogin.action> or at the recharge and Proof of Sales (POS) machines on campus.

- 校园卡充值

校园卡不可透支，访问学者可以使用现金进行充值，充值地点如下：

闵行校区：第一餐饮大楼旁边，周一到周五。

- Making purchases:

When purchases are made in campus shops, the seller inputs the cost amount into the POS machine. The card user then places his card on the electronic reader of the POS machine to validate the purchase and have the cost deducted electronically from the campus card. The payment is successful when the card balance is displayed on the POS machine screen.

- Reporting loss of the card:

Loss of your campus card can be reported by calling 34202020, logging on the site or the money transfer machine. Students would need to remember the card ID and password.  
<http://ecard.sjtu.edu.cn/homeLogin.action>

- Reactivating the card:

If the user finds the card after reporting its loss, and has not yet applied for a new replacement card, he/she can get the card reactivated at the Campus Card Operation Center. If the user has applied for a new card, the old card will not be reactivated.

- Reapply for a new card:

When the campus card is damaged or lost, the user should apply for a new replacement card on the 1st floor of the Building of Network and Information (next to the new library), bringing along an official form of ID. It costs 20RMB for the replacement of a card. The money that was in credit on the old card can be transferred to the new card.

- Cancelling the card:

The user should cancel the campus card on graduation. User can go through the required procedure and get the money in the card returned at any recharge sites, by showing proof of the school-leaving document.

**NOTE:**

Visitor ID card cannot be assigned to others. When you pick up a lost card, you should hand it in to the Campus Card Operation Center or find ways to return it to the user.

# Campus canteen

## 校园食堂

---

The canteens serve all three meals: Breakfast, Lunch and Dinner. In general, meals would be around RMB ¥ 10 to RMB ¥ 20 depending on your selection.

交大食堂供应一日三餐。一般花费 10-20 元人民币每餐。

### Minhang Campus 闵行校区

There are several canteens on Minhang campus, Cafeteria 1-6. (see details on the Minhang Campus map).

Opening hours:

Breakfast: 7:00~8:30; Lunch:11:00~13:00; Dinner:16:30~19:00;

交大闵行校区共有六座餐饮大楼（具体位置请见闵行校区校园地图）

开放时间:

早餐：7:00 ~ 8:30；午餐：11:00 ~ 13:00；晚餐：16:30 ~ 19:00；

### Xuhui Campus 徐汇校区

There is one canteen on Xuhui campus (No. 22 & 25 on the Xuhui Campus map)

Opening hours:

Breakfast: 7:00am-8:30am Lunch: 11:00am-13:00pm Dinner: 17:00am-19:00pm

徐汇校区共有一个食堂（具体位置请见徐汇校区校园地图）

开放时间

早餐：7:00 ~ 8:30；午餐：11:00 ~ 13:00；晚餐：17:00 ~ 19:00；

### Take-away website 外卖网站

EleMe: [www.ele.me](http://www.ele.me)

如需订外卖，可登录饿了么网站，网址：<http://ele.me/>

# Supermarkets & shopping centers

## 超市和购物中心

### Minhang Campus 闵行校区

On-campus: Supermarkets in each dormitory area, Hualian, and Convenient Stores(24-hour service)  
校园内: 每个学生宿舍区都有 24 小时便利店。闵行校区有华联生活中心和教育超市(具体位置请见闵行校区校园地图)

Off-campus: NGS supermarket(at the cross of YongPing Rd.and Cangyuan Rd.)Auchan(at the cross of Dongchuan Rd.and Humin Rd.)

校园外: 农工商超市(永平路沧源路); 欧尚超市(东川路沪闵路, 大型卖场)

### Xuhui Campus 徐汇校区

The supermarket is the west part of building 17 on Xuhui Campus map.

Here you can buy almost all the daily necessities.

教育超市(具体位置请见徐汇校区校园地图)

# Making calls

## 如何打电话

### International calls 国际长途:

China's country code: "86".

Shanghai area code: "21".

You can use an IP card to make international calls by landline telephones or your cell phones. To use an IP card:

- Dial the IP code number such as 17910 and 17950, and wait for a voice prompt to press 2 for English language.
- After the card number and PIN have been successfully input, a voice will tell you the account balance.
- You can dial the number you wish to call after this, or you can wait to listen to various options. For all international calls, you must first dial "00" and then the country code followed by.

## Office calls 数学楼办公室电话：

In the math building, dial 99 first and then dial the number you want to call. If you want to dial the extension numbers inside the math building, directly dial the extension number.

在数学楼内使用办公室电话拨打外线，请先拨“99”，然后再拨打您想拨的电话号码。拨打数学楼内的分机请直拨分机号。

# Wireless network

## 无线网络

---

Minhang campus public WIFI accounts: SJTU, SJTU-web

WIFI accounts in Math Building: AP01-AP03; password: 12345678

WIFI accounts in the Middle Lecture Room of Math Building: middle ; password: 12345678

WIFI accounts in the Large Conference Room of Math Building: mathconference; password: 12345678

闵行校区 WIFI 帐号：SJTU, SJTU-web

数学楼 WIFI 帐号：AP01-AP03，密码：12345678

数学楼中会议室 WIFI 帐号：middle 密码：12345678

数学楼大会议室 WIFI 帐号：mathconference 密码：12345678



Part IV  
第四部分

> Banks, Post Offices, Hospitals  
**银行, 邮局, 医院**

# Money Exchange and Banks

## 银行

Chinese currency is called Renminbi, often abbreviated as RMB. Issued by the People's Bank of China, it is the sole legal tender for both the Chinese nationals and foreign tourists. The unit for Renminbi is Yuan, Jiao and fen. The conversion among the three is: 1 Yuan (元) = 10 Jiao (角) = 100 Fen (分). Chinese people normally refer to Yuan as Kuai, Jiao as Mao. RMB is issued in both notes and coins. The denominations of paper notes include 100, 50, 20, 10, 5, 2 and 1 Yuan; 5, 2 and 1 Jiao; and 5, 2 and 1 Fen. The denominations of coins are 1 Yuan; 5, 2 and 1 Jiao; and 5, 2 and 1 Fen. Credit cards can be accepted at most hotels, tourist shops and department stores.

### 1) Money Exchange

- One can change money upon arrival at the international airports of Shanghai. The Bank of China exchanges money and travelers' checks. In China, wherever you exchange money the same day, the exchange rate is the same. The Banking Hour is Monday to Friday, 9:00 am to 4:30 pm.
- ATM machines that accept foreign ATM cards and dispense local currency are located throughout the country. Check the ATM's display of accepted logos before inserting your card.

Notes:

- Not all banks will change travelers' checks. We suggest that you ask before standing in line.
- Bring your passport when you exchange money in the bank.

### 2) Open an account

Visitors can open an account in local bank accounts if they need. To open an account, please your passport.

### 3) Banks and ATM

1) On campus:

Minhang Campus

Location of Bank of China

中国银行位置

The Bank of China is located in Cafeteria 4 (near Math Building, and see the details on Minhang Campus Map). The hotline of BOC is 95566

中国银行上海交通大学支行位于第四餐饮大楼内（靠近数学楼，具体位置请参见闵行校区校园地图）。中国银行热线电话：95566

ATMs 自动柜员机分布

- a. Industrial & Commercial Bank of China on campus
- b. Bank of China on campus
- c. ATM (Bank of China) on the 1st floor of Cafeteria 2
- d. ATM (Bank of Communication) at the east side of Cafeteria 2
- e. ATM (Industrial Bank) at both Cafeteria 3 and Cafeteria 4
- f. ATM (Bank of Shanghai) on the 1st floor of Hualian Living Center Xuhui Campus
- a. ATM in Faculty Club (No. 3 on the Xuhui Campus map)
- b. ATM in Main canteen (No. 22 & 25 on the Xuhui Campus map)

## Post office

### 邮局

#### Minhang Campus

SJTU Post office

Add: Room 110A, Student Service Center, Minhang Campus, Shanghai Jiao Tong University  
Tel: (86-21) 54742986

Opening hours: 8:30~11:00 12:30~16:30, Monday-Saturday

Domestic express delivery:

STO (Rm#106, Student Service Center, Tel: 54742386/15221070947)

EMS (Tel: 13818069120)

SF Express (Tel: 18217013463)

#### 闵行校区

交大闵行校区邮政所

地址：上海交通大学闵行校区（东川路 800 号）学生服务中心 110A 室

电话：（86-21）54742986

开放时间：周一～周六，8:30～11:00 12:30～16:30

闵行校区国内快递公司联系方式

申通（学生服务中心 106 室，电话：54742386/15221070947）

邮政快递（电话：13818069120）

顺丰快递（电话：18217013463）

# Hospitals and Clinics Services

## 医院及医疗服务

---

### Minhang Campus

On campus: School Hospital of Minhang Campus is in front of Building No.9 near Gate Dongchuan Rd. There is a campus bus stop named “School Hospital”.

Emergency Tel: 54742417(day) 54742400(night)

Off-campus: Hospital/Physical examination near Minhang Campus:

Shanghai 5th Peoples Hospital, No.801, Heqing Rd., Minhang District Tel: 64308151

### 闵行校区

校医院: 位于9号楼的前面, 靠近东川路永平路大门 (具体位置请见闵行校区校园地图)。  
校园巴士设有一站 - “校医院”。

值班电话: 54742417(白天) 54742400(晚上)

### Xuhui Campus

University Hospital

University Hospital of Xuhui Campus is No.6 on the map, near the main Entrance of SJTU Xuhui Campus

Emergency Tel: 62933000

### 徐汇校区

校医院 (靠近广元路校门, 具体位置请见徐汇校区校园地图)

值班电话: 62933000

### Notes:

If you need to go to the hospital or clinic, please prepare the following items: passport, credit card, cash, any medical information that may be pertinent and your medical/travel insurance details.



Part V  
第五部分

> Other Useful Information  
**其他事项**



# Transportation

## 交通

### Transportation Card

Shanghai Public Transportation Card (SPTC/ 上海公共交通卡) is convenient and popular in Shanghai. The 8.5cm by 5.5cm card is widely used for payment on local buses, taxis, Metro lines and docks, etc.

You can purchase it at metro stations, banks and convenient stores. On initial purchase, according to the new transport regulations, the buyer shall pay 20 yuan (US\$3.20) as deposit. For example, if you pay 100 yuan to get a transport card, you will have only 80 yuan credit in the card. The deposit is refundable as long as there is less than 10 yuan credit in the card.



You can refund your transport card at the following Metro stations:

- Line 1: Hanzhong Road, Hengshan Road, Jinjiang Park, Gongkang Road Stops.
- Line 2: Jiangsu Road, Nanjing Dong Road(East Nanjing Rd), Century Park Stops.
- Line 3: Dongbaoxing Road, Caoxi Road, Zhenping Road Stops.

You can also refund your transport card at these places:

- No.218, Taixing Road. Open hour: 9:00-17:00, every day except holidays.
- 3rd Floor, No.389, Meiyuan Road. Open hour: 8:30-16:30, Monday to Friday.
- 2nd Floor, No.920, Nanjing Xi Road. Open hour: 9:00-17:00, every day except holidays.
- No.161, Luochuan Dong Road. Open hour: 9:30-16:00, every day except holidays.
- No.121, Xinbei Road, Minhang District. Open hour: 9:00-16:00, every day except holidays.

### Taxi

Taxis in Shanghai are plentiful and market competition has driven taxi fare down to affordable prices for the average resident (¥13+¥1(gas surcharge)( ¥17+¥1(gas surcharge) after 11:00pm )for the first 3 kilometers).

Taking a taxi is a fast and convenient way to get around Shanghai. The city has the best-managed taxi service in China.

Main Taxi Corp	Taxi Booking Call	Complaints Call
Quangsheng(with yellow cars)	62580000	62581234
Dazhong(with turqupise cars)	96822	62580780
Jinjiang(with white cars)	96961	64169292

### Shanghai Taxi Fare

	0~3km	3~10km	Above 10km	Gas Surcharge
Day time: (5:00~23:00)	RMB 13	RMB 2.4/km	RMB 3.6/km	RMB 1
Night time: (23:00~5:00)	RMB 17	RMB 3.1/km	RMB 4.7/km	RMB 1
*5 minutes waiting equals to one kilometer in charging				

### Tips

- An empty taxi is recognized by a green, lit-up sign saying 'kong che(空车)' (empty car) on the dashboard. It is generally easy to pick up a taxi, unless it is raining or mid rush-hour when it is practically impossible.
  - As mentioned, you may find cabs scarce in rush hours and on rainy days. Taxi call centers will also become too busy to reach in these situations. Your best bet is probably to head for places taxis haunt, such as restaurants. Although taxis don't often park outside restaurants, many people go there by taxi. If you are quick enough, you can jump in as other passengers get out.
  - Don't try to hail a cab at crossroads, as taxi drivers cannot stop their cars within 30 meters from an intersection to pick up passengers.
  - Cabbies in Shanghai are also not allowed to take a tip. Most of them are amicable, but their English is limited. So it's best to get someone to write down your destination in Chinese.
  - Remember to take the receipt. The slip will contain information on the taxi, including its plate number and the taxi company. In case you leave something in the car, the receipt will give you clues to find it.
  - "Juzai" (拒载) is not a technical term, but the Chinese phrase only used in the taxi industry. It means cabbies refuse to drive passengers to the destination they want. In Shanghai, taxi drivers are not allowed to do so for any reason, once the passenger is in the car. Although "juzai" rarely happens nowadays, we think you'd better know something about this.
    - In case you come across a "juzai" or some other unhappy experience with a taxi, you can complain to the local taxi authority by dialing 962000.
    - All the city's taxis are compatible with the Public Transportation Card. If a driver refuses to accept the card, you have the right to decline payment.

### Bus

Public buses in Shanghai are often packed but they are the most convenient and a relatively cheap way to loop the city. There are more than 1,100 bus lines in Shanghai which run into each corner of the city.

Shanghai's public bus system is quite comprehensive. Buses preceded by the number "2", "3", "9" are rush-hour, night service buses, double-decked/ tourism buses, respectively, and buses 1-199 run from 5 am to 11 pm.

Fares range from 2 Yuan to 4 Yuan depending on the length of routes or bus conditions.

\*Shanghai Railway Station, People's Square, Xujiahui, and Zhongshan Park, are hubs of the public buses network.

## Metro

Shanghai has an extensive public transport system, largely based on buses, taxis, and a rapidly expanding metro system. All of these public transport tools can be accessed using the Shanghai Public Transportation Card( 上海公共交通卡 ). The Shanghai Metro rapid-transit system and elevated light rail has eleven lines (numbers 1, 2, 3, 4, 5, 6, 7, 8, 9, 10, 11) at present and extends to every core urban district as well as neighboring suburban districts such as Songjiang and Minhang.

Fares: ¥3 to ¥10, depending on distance.

The closest Stop to the Minhang Campus is Dongchuan Road Station (Line 5).

The closest Stop to the Xuhui campus is Xujiahui stop (Line 1 & Line 9). Hongqiao Road stop (Line 3&4), Jiao Tong University stop (Line 10) are on the other side of Xuhui Campus.

Shanghai Metro Map Link: <http://www.exploreshanghai.com/metro/>

\*Note: Public buses and Metro in China are often crowded and Shanghai is no exception. If you choose to take a bus or metro to travel around, please take especial attention to your belongings for pickpockets usually take advantage of the crowded condition to steal stuffs.

## Maglev Train

As a major project of Shanghai's traffic development, Shanghai Maglev Demonstration Line is the Sino-German cooperative project with the multiple functions of transportation, demonstration and tourism. It is 29.863 kilometers long from Longyang Road Stop of Metro Line 2 in the west to Pudong International Airport in the east. The designed highest speed is 431 kilometers per hour. A single trip takes 7 minutes and 20 seconds. It is the fastest land-transportation means in the world today.

The Maglev has been running since Dec.31, 2002. It is running all day long now.

Fare:

Ordinary Ticket: RMB 50 yuan for one-way ticket and RMB 80 yuan for return ticket

VIP Ticket: RMB100 yuan for one-way ticket and RMB 160 yuan for return ticket

## Shanghai Flights & Airports

Shanghai has two commercial airports: Hongqiao International Airport and Pudong International Airport, the latter of which has the third highest traffic in China, following Beijing Capital International Airport and Hong Kong International Airport. Pudong International handles more international traffic than Beijing Capital. Hongqiao mainly serves domestic routes, with a few city-to-city flights to Tokyo's Haneda Airport and Seoul 's city airport.

Airport Inquiry Number: +86 21 96990

Pudong International Airport---Minhang Campus (About 50 km)

Option 1: By Taxi. It takes about 200yuan at daytime (5:00am to 11:00pm) and 250 yuan at nighttime (11:00pm to 5:00am).

Option 2: Take the Airport bus line No. 7 which will take you directly to the South railway station, then

Option (a): take the Shanghai urban bus Line No.180 to Minhang Campus.

Option (b): Take to Metro Line 1 to terminus: Xinzhuang Stop, transfer to the Metro Line 5 to DongChuan Road Stop, then take a taxi to Minhang Campus Airp

Option 3: Take the Metro Line 2, transfer to Line 1 at People's Square Stop to the terminus: Xinzhuang Stop, transfer to the Metro Line 5 to DongChuan Road Stop, then take a taxi to Minhang Campus.

#### Pudong International Airport---Xuhui Campus

Option 1: By Taxi. It will take about 200yuan at the daytime (5:00am to 11:00pm) and 250 yuan at the nighttime (11:00pm to 5:00am).

Option 2: Take the Metro Line 2, transfer to Line 1 at People's Square Stop to the Xujiahui Stop (About 10 minutes walking distance to Xuhui Campus)

Option 3: Take the Airport bus line No.3, get off at Zhaojiabang & Tianping Rd.(Xujiahui- 徐家汇 ) Stop, then take a taxi to Xuhui Campus. (About 15 minutes walking distance to Xuhui Campus)

#### Hongqiao International Airport –Minhang Campus

Option 1: By Taxi. It will take about 130 yuan at the daytime (5:00am to 11:00pm) and 150 yuan at the nighttime (11:00pm to 5:00am).

Option 2: Take MetroLine2 and transfer to Line 1 at People Square Station and then transfer to Line 5 at Xinzhuang, and get off at Dongchuan Road Station and take a taxi to the Minhang Campus.

#### Hongqiao International Airport ---Xuhui Campus

Option 1: By Taxi. It will take about 45 yuan at the daytime (5:00am to 11:00pm) and 60 yuan at the nighttime (11:00pm to 5:00am).

Option 2: Take the Metro Line 10 to the Shanghai Jiao Tong University Stop in Huai Hai Xi Rd. (About 5 minutes walking distance to Xuhui Campus)

## Train

The city of Shanghai has several railway stations, among which Shanghai Railway Station, Shanghai South Railway Station and Shanghai Hongqiao Railway Station are the main ones. These three stations provide convenient transportation for tourists to many destinations throughout China.

### Buying Train Tickets

Tickets for trains departing from Shanghai are sold nine days before the departure day. You can go directly to the ticket office on the first floor of the Complex Ticket Building of Shanghai Railway Station to buy tickets. For more additional information you can call the Shanghai Railway Station Information Line at 021-63179090, 021-95105123 or the Ticket Booking Line at 021-8008207890 (toll free), 021-95105105.

### Shanghai Railway Station

Shanghai Railway Station, also known as New Railway Station. It serves as the largest passenger railway station in the city. Every day at least 80 pairs of trains run between Shanghai and other cities all over the country, including Beijing, Xi'an, Qingdao, Harbin, Chengdu, Kowloon etc. Additionally it has high speed trains to Beijing, Nanjing, Suzhou, Wuxi, Changzhou, and Changsha.

Shanghai Railway Station Enquiry: 021-63179090, 021-95105123

Add: 303 Molin Road, near Tianmu Xi Road, Zhabei District ( 闸北区秣陵路 303 号近天目西路)

### Shanghai South Railway Station

Most of the trains from Shanghai South Railway Station go to cities of Zhejiang Province including Hangzhou, Shaoxing, Ningbo, Jinhua, Wenzhou and most of the cities in the Southern provinces of China, excluding the Shanghai-Hong Kong line.

Shanghai South Railway Station Enquiry: 021-51105110

Add: 289 Old Humin Road, Xuhui District ( 徐汇区老沪闵路 289 号 )

### Shanghai Hongqiao Railway Station

The high speed trains ( 动车 D、 高铁 G ) for Beijing, Nanjing, Suzhou, Wuxi, Hefei, Wuhan, Chengdu, Chongqing, Hangzhou, Jinhua, Nanchang, Changsha, Ningbo, Wenzhou, Fuzhou and Xiamen are from this station.

Shanghai Hongqiao Railway Station Enquiry: 021-5124 5555

Tip: You can take Metro Line 2 or Line 10 to Shanghai Hongqiao Railway Station.

## Voltage

### 电压

Electricity is supplied at 220 volts, 50 cycles.

## Public holidays in mainland China

### 公共假期

There are currently seven official public holidays in the mainland territory of the People's Republic of China.

Date	English name	Duration
January 1	New Year	1 day
1 <sup>st</sup> day of 1 <sup>st</sup> lunar month	Chinese New Year	3 days
5 <sup>th</sup> Solar Term (April 4 or 5)	Qing Ming Festival	1 day
May 1	Labor Day	1 day
5 <sup>th</sup> day of 5 <sup>th</sup> lunar month	Dragon Boat Festival	1 day
15 <sup>th</sup> day of 8 <sup>th</sup> lunar month	Mid-Autumn Festival	1 day
October 1	National Day	3 days

Generally, if there is a 3-day-holiday, the government will declare it to be a consecutive 7 day holiday, including the weekends before and afterwards. This means that shops, banks, schools, etc., treat Saturday and Sunday as if they were Monday and Tuesday (or whatever weekdays they have been 'swapped' with). The resulting disruption is accepted as normal.

## Useful Phone Numbers in Shanghai

### 实用电话号码信息汇总

Country code	86
City code	21
Police	110
Fire	119
Ambulance	120
Local telephone number inquiry	114
Weather forecast	12121
Police service for traffic accidents	122
Shanghai tourism hotline	962020
Flight inquiry	96990
Free hotline for railway tickets booking	95105105
Shanghai Call Center	962288
Post Service	11185
Shanghai Telecom	10000
China Mobile	10086



Part VI  
第六部分

> FAQ  
常见问题



## ( 1 ) What are the languages and dialects spoken in Shanghai ?

As residents in an international metropolis, local Shanghai people speak both Mandarin (Putonghua) and Shanghai dialect. Moreover, many people, especially the young generation are learning English as a foreign language. They are willing to communicate with you in English if you need help. In the meantime, most people working in travel agencies and other service industry (e.g. taxi drivers, shop assistants, waiters and waitresses) can speak some basic English.

## ( 2 ) How is the public security situation in Shanghai ?

Shanghai may be one of the safest cities around the world. Most people in the city seldom worry about to be robbed when they walk on the streets while burglaries are also not easy to be heard, watched or read from media reports, say nothing of being killed by guns or pistols.

But, you should still pay enough attention on your wallet, briefcase or knapsack when you wander among people on main streets, shopping malls or markets in the city.

Walking at night is also safe, at least on the main streets of the city. Foreigners, especially women, won't get nervous when they return home at night. Up till now, people haven't got the news that foreign women insulted or hurt by criminals in the city. But still try to avoid those unfamiliar places, such as small dark lanes, and the suburbs of the city.

In case of emergencies, please call 110 for police, 119 for fire emergency and 120 for ambulance.

## ( 3 ) Is it safe to drink water directly from the tap?

No. You are encouraged to drink bottled water.

## ( 4 ) Is tipping necessary when dining in Shanghai ?

Consumer taxes are included in price tags on goods. Cafeterias and bars in all hotels and some restaurants and bars outside hotels may include a service charge of 10% to 15%. Tipping is not expected in most restaurants and hotels. But, tipping can be a way to show your satisfaction with the services.

## ( 5 ) Where can foreign visitors buy books in foreign languages?

Is there any foreign channels on TV?

There are five foreign book stores in Shanghai:

Headquarter: 390 Fuzhou Road (福州路 390 号)

Branches: 228 Huashan Road (华山路 228 号上海国际贵都大饭店办公楼)

6 Zun Yi Nan Road (遵义南路 6 号虹桥友谊商城 1 楼)

258 Mo Lin Road, near Shanghai Railway Station (秣陵路 258 号)

554 Bi Yun Road, Pudong (碧云路 554 号)

For TV Channels, ICS is available in 5 million cable TV households in Shanghai, and reaches an even wider audience through its website: [www.ICShanghai.com](http://www.ICShanghai.com). It broadcasts 24 hours a day. The schedule includes 6 hours of first-run programs, more than 3 hours of which are locally produced. ICS is the only comprehensive TV Channel in China broadcasting in both English and Japanese (with Chinese subtitles). Programs include news and information, fashion and entertainment, language learning, talk shows and English-language movies.

Besides, CCTV News is the English-language 24-hour news channel of China Central Television, China's largest national TV network. It reports news and feature programs to global audience, with a special focus on China. CCTV International covers the globe via six satellites. Its programs can now be seen by 45 million subscribers outside China.

## ( 6 ) Is imported food served in supermarkets?

Imported food is served in big local supermarkets and foreign supermarkets:

Ole' Food Hall, 1 Hong Qiao Road, Grand Gateway B1 ( 虹桥路 1 号港汇恒隆广场 B1 楼 )

City Shop, 135 Xin Geng Road, ( 辛耕路 135 号永新坊 B1 楼 08A)

City Shop, 160 Xin Hua Road, Shanghai Film Art Center B1 ( 新华路 160 号上海影城 B1 楼 )

## ( 7 ) What are the driving habits in Shanghai?

China is now the world's largest automobile market. Every month more than a million new cars are on the highway and new roads can't be built fast enough to serve them. And for the roads that do exist, some space that a car ought to be using is given over to electric scooters and pedicabs.

In China, cars turning right don't need to wait for a green light in most streets. Please be careful with the cars turning right.

## ( 8 ) Special tips for toilets in China:

We suggest that you bring your own tissues when you go to toilets in China. If you go to public toilets, you can buy tissues at the entrances. But remember, not all toilets provide tissues, such as the ones in metro, in shopping malls, etc.

# General Office Staff of Mathematics Department

## 数学系行政人员信息指南

---

### 查杰

系主任助理

办公室：数学楼 1208  
电话：54743148-1208  
邮箱：jcha@sjtu.edu.cn



### Jie Zha

Assistant to Chair  
Office: Room# 1208.  
Phone: 54743151-1208  
E-mail: jcha@sjtu.edu.cn

### 朱辉钰

系主任助理，办公室主任

办公室：数学楼 1101  
电话：54743148-1528  
邮箱：zhuhy@sjtu.edu.cn



### Huiyu Zhu

Assistant to Chair, Administrative Director  
Office: Room# 1101  
Phone: 54743151-1528  
E-mail: zhuhy@sjtu.edu.cn

### 郭恒亮

科研秘书，科学工程教育部  
重点实验室秘书

办公室：数学楼 1101  
电话：54743148-1528  
邮箱：ghl@sjtu.edu.cn



### Hengliang Guo

Research Affairs Secretary  
Office: Room# 1101  
Phone: 54743151-1528  
E-mail: ghl@sjtu.edu.cn

### 秦丽敏

外事秘书

办公室：数学楼 1101  
电话：54743148-1526  
邮箱：qinlimin@sjtu.edu.cn



### Limin Qin

Foreign Affairs Secretary  
Office: Room# 1101  
Phone: 54743151-1526  
E-mail: qinlimin@sjtu.edu.cn

### 秦文君

讲席教授秘书

办公室：数学楼 1103  
电话：54743152  
邮箱：qwj89@sjtu.edu.cn



### Wenjun Qin

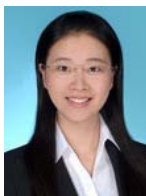
Secretary to Chair Professors  
Office: Room# 1103  
Phone: 54743152  
E-mail: qwj89@sjtu.edu.cn

**徐恒敏**  
研究生教学秘书  
办公室：数学楼 1101  
电话：54743148-1101  
邮箱：hmxu@sjtu.edu.cn



**Hengmin Xu**  
Graduate Affairs Secretary  
Office: Room# 1101  
Phone: 54743151-1101  
E-mail: hmxu@sjtu.edu.cn

**余敏**  
宣传干事  
办公室：数学楼 1307  
电话：54743151-1307  
邮箱：yumin\_sjtu@sjtu.edu.cn



**Min Yu**  
HR  
Office: Room# 1307  
Phone: 54743151-1307  
E-mail: yumin\_sjtu@sjtu.edu.cn

**张喜平**  
资料建设、信息员  
办公室：数学楼 1103  
电话：54743152  
邮箱：zhangxiping@sjtu.edu.cn



**Xiping Zhang**  
Librarian  
Office: Room# 1103  
Phone: 54743152  
E-mail: zhangxiping@sjtu.edu.cn

**周洁**  
本科教学秘书  
办公室：数学楼 1101  
电话：54743148-1527  
邮箱：talentgirl.jane@sjtu.edu.cn



**Jie Zhou**  
Undergraduate Affairs Secretary  
Office: Room# 1101  
Phone: 54743151-1527  
E-mail: talentgirl.jane@sjtu.edu.cn

**朱琳**  
组织人事干事  
办公室：数学楼 1307  
电话：54743151-1307  
邮箱：linzhu@sjtu.edu.cn



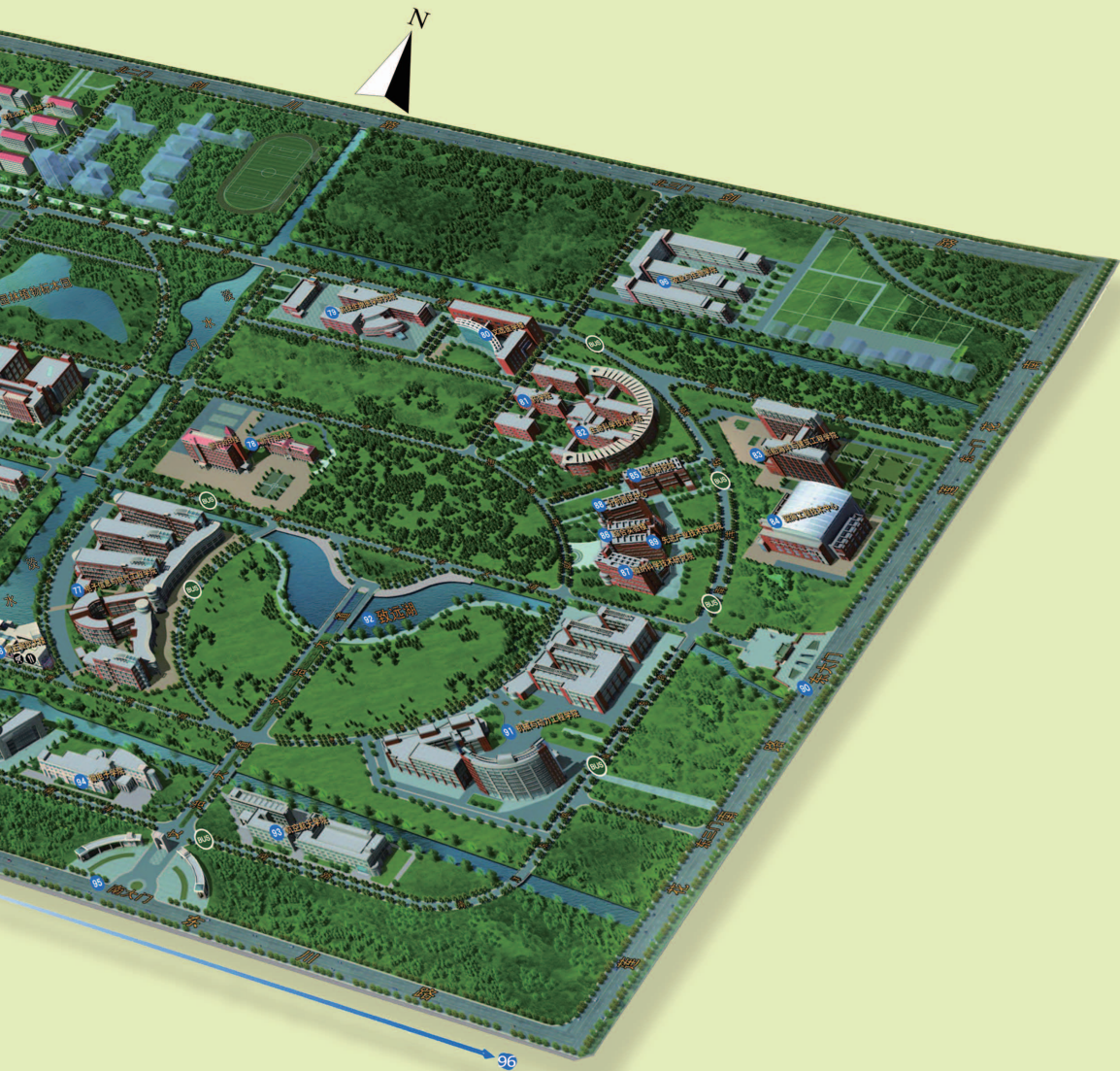
**Lin Zhu**  
HR  
Office: Room# 1307  
Phone: 54743151-1307  
E-mail: linzhu@sjtu.edu.cn

Department of Mathematics  
Shanghai Jiao Tong University  
上海交通大学数学系

校园建筑物  
中英文对照  
序号列表  
(按中文名称拼音排序)

- ① 包玉刚图书馆 Yue-Kong Pao Library
- ② 材料科学与工程学院 School of Materials Science & Engineering
- ③ 陈瑞球楼 Chan Sui Kau Hall
- ④ 程及艺术馆 Chen Chi Gallery
- ⑤ 船舶海洋与建筑工程学院 School of Naval Architecture, Ocean & Civil Engineering
- ⑥ 第二餐饮大楼 Canteen Building 2
- ⑦ 第三餐饮大楼 Canteen Building 3
- ⑧ 第四餐饮大楼 Canteen Building 4
- ⑨ 第五餐饮大楼 Canteen Building 5
- ⑩ 第一餐饮大楼 Canteen Building 1
- ⑪ 电力学楼 Electrical Engineering & Mechanics Building
- ⑫ 电力设备楼 Electric Power Equipment Building
- ⑬ 电子信息与电气工程学院 School of Electronic, Information and Electrical Engineering
- ⑭ 东大门 East Main Gate
- ⑮ 东上院 East Upper Hall
- ⑯ 东下院 East Lower Hall
- ⑰ 东中院 East Middle Hall
- ⑱ 分析测试中心 Instrumental Analysis Center of SJTU
- ⑲ 工程训练中心 Engineering Training Center
- ⑳ 光彪楼 Guangbiao Hall
- ㉑ 光明体育场 Guangming Stadium
- ㉒ 国家能源智能电网(上海)研发中心 State Energy Smart Grid R&D Center
- ㉓ 涵泽湖 Hanzhe Lake
- ㉔ 航空航天学院 School of Aeronautics & Astronautics
- ㉕ 后勤办公楼 Logistics Offices
- ㉖ 候车室 Shuttle Bus Terminal
- ㉗ 华联校园生活中心 Huailian Shopping Center
- ㉘ 化学工程学院 School of Chemistry and Chemical Engineering
- ㉙ 环境科学与工程学院 School of Environmental Science & Engineering
- ㉚ 机械与动力工程学院 School of Mechanical Engineering
- ㉛ 激光等离子体教育部重点实验室 Laboratory For Laser Plasmas
- ㉜ 激光制造楼 Laser Processing Building
- ㉝ 计算中心楼 Computer Center
- ㉞ 教育超市(东区) School Supply Supermarket(E)
- ㉟ 教育超市(南区) School Supply Supermarket(S)
- ㊱ 菁菁堂 Jing-Jing Auditorium
- ㊲ 凯源法学院 Koguan Law School
- ㊳ 老行政楼 Old Administration Building
- ㊴ 粒子物理宇宙学研究所 INPAC-Institute of Nuclear, Particle, Astronomy, and Cosmology
- ㊵ 留园 Liu Yuan Restaurant
- ㊶ 媒体与设计学院 School of Media & Design
- ㊷ 密西根学院 UM-SJTU Joint Institute
- ㊸ 南大门 South Main Gate
- ㊹ 南区体育场 Football Field(S)
- ㊺ 能源研究院 Research Institute of Energy
- ㊻ 农业与生物学院 School of Agriculture and Biology
- ㊼ 人民武装部 Paramilitary Department
- ㊽ 人文学院 School of Humanities
- ㊾ 软件学院 School of Software
- ㊿ 商业街 Shopping Street
- ① 上院 Upper Hall
- ② 深海工程技术中心 Deepwater Offshore Technology Center
- ③ 生命科学学院 School of Life Sciences & Biotechnology
- ④ 数学系 Department of Mathematics
- ⑤ 思源湖 Siyuan Lake
- ⑥ 思源门 Siyuan Gate
- ⑦ 铁铮馆 Tiesheng Hall
- ⑧ 图书信息楼 Library & Information Tower
- ⑨ 土木环境楼 Civil & Environmental Engineering Building
- ⑩ 外国语学院 School of Foreign Languages
- ⑪ 威达楼 Weida Building
- ⑫ 微电子学院 School of Microelectronics
- ⑬ 微纳科学技术研究院 Research Institute of Micro/Nano Science & Technology
- ⑭ 文选医楼 Wenxuan Building of Medicine
- ⑮ 西南体育馆 SouthWest Gymnasium
- ⑯ 系统生物医学研究所 Shanghai Center for Systems Biomedicine
- ⑰ 下院 Lower Hall
- ⑱ 先进产业技术研究院 Advanced Industrial Technology Research Institute
- ⑲ 校车队 Shuttle Bus Service Office
- ⑳ 校医院 School Hospital
- ㉑ 新体育馆 Gymnasium
- ㉒ 行政A、B楼 Administration Building A&B
- ㉓ 学生服务中心 Student Service Center
- ㉔ 学生公寓(东1-14) Dormitories (E1-14)
- ㉕ 学生公寓(东15-19) Dormitories (E15-19)
- ㉖ 学生公寓(东20-27) Dormitories (E20-27)
- ㉗ 学生公寓(东28-33) Dormitories (E28-33)
- ㉘ 学生公寓(西10) Dormitories (W35-49)
- ㉙ 学生公寓(西11-24) Dormitories (W11-24)
- ㉚ 学生公寓(西25-34) Dormitories (W25-34)
- ㉛ 学生公寓(西35-49) Dormitories (W35-49)
- ㉜ 学生公寓(西50-70) Dormitories (W50-70)





- 8 学生公寓 (西8-9) Dormitories (W8-9)
- 9 学生公寓 (臻臻楼) Dormitories (Zhen-Zhen Building)
- 10 学术活动中心 Academic Exchange Center
- 11 药学院 School of Pharmacy
- 12 逸夫科技楼 Yifu Hall of Science & Technology
- 13 印刷厂 Printing House
- 14 游泳池 Swimming Pool
- 15 园林植物标本园 Botanical Garden
- 16 原建工楼 (现化学化工学院) Civil Engineering Building (Now School of Chemistry and Chemical Engineering)
- 17 致远湖 Zhiyuan Lake
- 18 致远学院 Zhiyuan College
- 19 中意绿色能源实验室 Sino-Italian Green Energy Laboratory
- 20 中院 Middle Hall
- 21 综合实验楼 Comprehensive Laboratory Building



餐饮  
Canteen



邮局  
Post Office



超市  
Store



医院  
Hospital



ATM 银行  
ATM/Bank



BUS  
巴士站  
Bus Stop



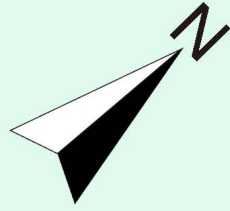
上海交通大学数学系  
Department of Mathematics  
Shanghai Jiao Tong University

数学系2号楼  
Math Building (No 2)

数学系1号楼  
Math Building (No 1)

思源湖  
Siyuan Lake

数学系3号楼  
Math Building



物理与天文系

Department of Physics and Astronomy

are here



自然科学研究院

Institute of Natural Sciences

(No3)

---

上海交通大学数学系  
Department of Mathematics, Shanghai Jiao Tong University

---

通讯地址：中国上海市东川路 800 号，邮编：200240  
ADD : No 800 Dongchuan Road, Shanghai, 200240, China  
电话 /Tel : 86-21-54743148  
传真 /Fax : 86-21-54743152  
网址 : <http://www.math.sjtu.edu.cn/>

---